

Stollmann E + V GmbH	TA+USBA User Guide
-------------------------	-----------------------



TA+USBA

User Guide

Stollmann E + V GmbH	TA+USBA User Guide
-------------------------	-----------------------



Note

This device was developed for the purpose of communication in an office environment. It is intended solely for our industrial clients for physical integration into their own technical products after careful examination by experienced technical personnel for its suitability for the intended purpose. The device was not developed for or intended for use in any specific customer application. The firmware of the device may have to be adapted to the specific intended modalities of use or even replaced by other firmware in order to ensure flawless function in the respective areas of application. Performance data (range, power requirements, etc.) may depend on the operating environment, the area of application, the configuration, and method of control, as well as on other conditions of use; these may deviate from the technical specifications, the Design Guide specifications, or other product documentation. The actual performance characteristics can be determined only by measurements subsequent to integration. Variations in the performance data of mass-produced devices may occur due to individual differences between such devices. Device samples were tested in a reference environment for compliance with the legal requirements applicable to the reference environment. No representation is made regarding the compliance with legal, regulatory, or other requirements in other environments. No representation can be made and no warranty can be assumed regarding the suitability of the device for a specific purpose as defined by our customers. Stollmann reserves the right to make changes to the hardware or firmware or to the specifications without prior notice or to replace the device with a successor model. Of course, any changes to the hardware or firmware of any devices for which we have entered into a supply agreement with our customers will be made only if, and only to the extent that, such changes can reasonably be expected to be acceptable to our customers. No general commitment will be made regarding periods of availability; these must be subject to individual agreement. All agreements are subject to our Terms and Conditions for Deliveries and Payments, a copy of which is available from Stollmann.

Copyright © 2005-2007 Stollmann E+V GmbH

Trademarks

Trademarks and trade names are those of their respective owners.

Author: ta	Date of Saving: 12.03.07	Ref: TA+USBA_UserGuide_V1.00.doc	Revision: 1.00	Page 2 of 17
------------	--------------------------	----------------------------------	----------------	--------------

Stollmann E + V GmbH	TA+USBA User Guide
-------------------------	-----------------------



Table of Contents

1 Generals..... 4

2 Installation 4

 2.1 Driver Installation under Windows 2000/XP 4

 2.2 Modem Installation under Windows 2000/XP 11

 2.3 Uninstalling TA+USBA under Windows 2000/XP 15

3 History 17

Stollmann E + V GmbH	TA+USBA User Guide
-------------------------	-----------------------



1 Generals

The TA+USBA uses the USB interface for serial communication with the application software. This will be done by using a system specific driver. This driver emulates a serial port and transmits the data via the USB interface to the ISDN adapter. This virtual serial COM port driver needs to be integrated into the operating system and the application software should be able to communicate with the virtual serial COM port driver.

The virtual COM port driver supports speeds from 300 bps up to 921600 bps on the serial interface. But the maximum speed supported by the TA+USBA hardware is 230400 bps. Therefore don't use speeds higher than 230400 bps with the virtual COM port driver.

Take note that the configured serial speed in the virtual COM port driver is the one which is used for the real data transmission. A serial speed lower than 115200 bps may increase the maximum data rate on the ISDN line.

2 Installation

The TA+USBA supports the following operating systems:

- Windows 2000
- Windows XP

In general the driver installation under Windows 2000 is similar to the one under Windows XP. Therefore we decided to describe the installation under Windows XP only.

2.1 Driver Installation under Windows 2000/XP

To install the drivers for TA+USBA under Windows XP, follow the instructions below:
Insert the TA+USBA driver CD into the CD-ROM drive of your PC.

Stollmann E + V GmbH	TA+USBA User Guide
-------------------------	-----------------------



Connect the TA+USBA to a free USB port on your PC. The Windows Found New Hardware Wizard will launch and the screen below is shown. Select "No, not this time" from the options available and then click "Next" to proceed with the installation.



Select "Install the software automatically (Recommended)" as shown below and then click "Next".



Stollmann E + V GmbH	TA+USBA User Guide
-------------------------	-----------------------



If Windows XP is configured to warn when unsigned (non-WHQL certified) drivers are about to be installed, the following screen will be displayed unless installing a Microsoft WHQL certified driver. Click on "Continue Anyway" to continue with the installation. If Windows XP is configured to ignore file signature warnings, no message will appear.



The following screen will be displayed as Windows XP copies the required driver files.



Stollmann E + V GmbH	TA+USBA User Guide
-------------------------	-------------------------------------



Windows should then display a message indicating that the installation was successful. Click "Finish" to complete the installation.



The Found New Hardware Wizard will launch automatically to install the COM port emulation drivers. As above, select "No, not this time" from the options available and then click "Next" to proceed with the installation.



Stollmann E + V GmbH	TA+USBA User Guide
-------------------------	-----------------------



Select "Install the software automatically (Recommended)" as shown below and then click "Next".



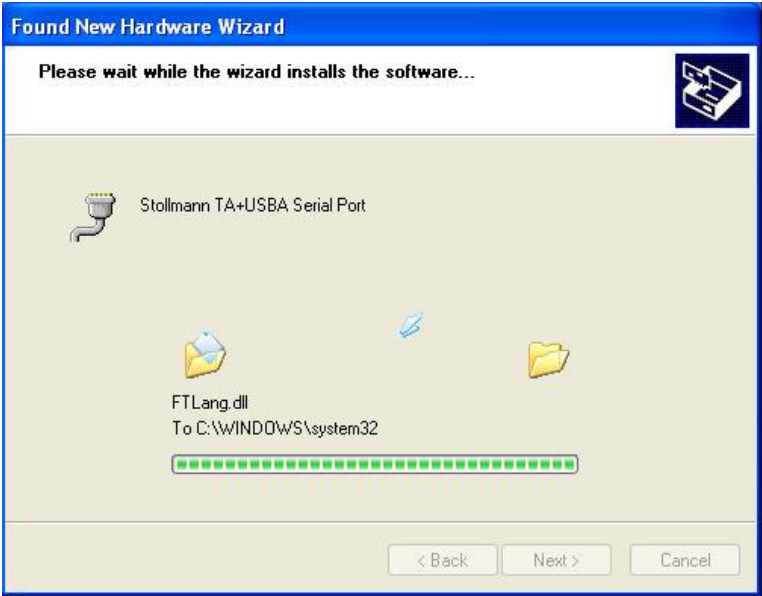
If Windows XP is configured to warn when unsigned (non-WHQL certified) drivers are about to be installed, the following screen will be displayed unless installing a Microsoft WHQL certified driver. Click on "Continue Anyway" to continue with the installation. If Windows XP is configured to ignore file signature warnings, no message will appear.



Stollmann E + V GmbH	TA+USBA User Guide
-------------------------	-----------------------



The following screen will be displayed as Windows XP copies the required driver files.



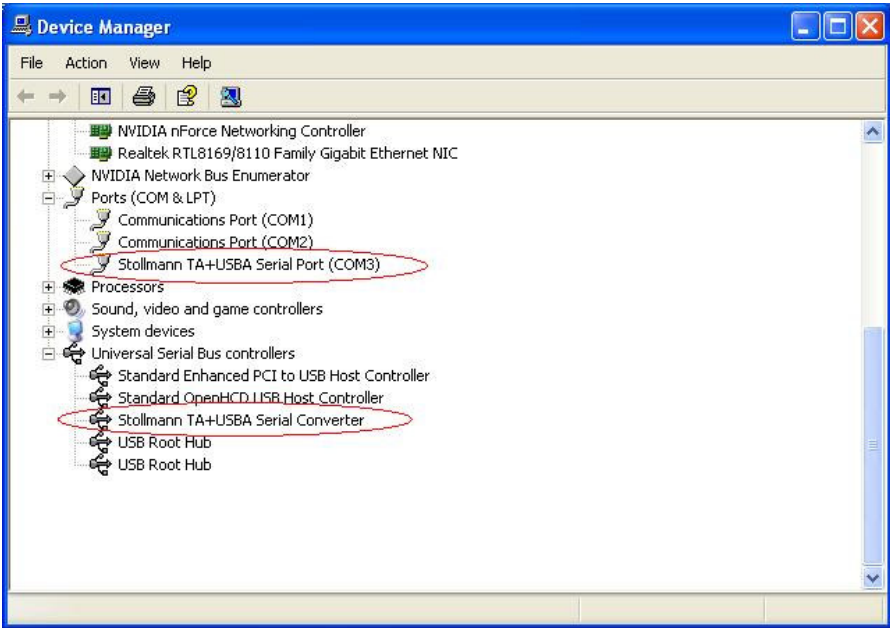
Windows should then display a message indicating that the installation was successful. Click "Finish" to complete the installation.



Stollmann	TA+USBA
E + V GmbH	User Guide



After the driver installation is completed the "Stollmann TA+USBA Serial Converter" appears in the Windows Device Manager (located in "Control Panel\System" then select the "Hardware" tab and click "Device Manager") with an additional COM port with the label "Stollmann TA+USBA Serial Port". The COM port number is the first available free COM port number of the PC.



Stollmann E + V GmbH	TA+USBA User Guide
-------------------------	-----------------------



2.2 Modem Installation under Windows 2000/XP

On the driver CD we provide specific modem profiles for using with the TA+USBA. Depending on your application you may install one of these profiles. To do so please follow the instructions below:

Open the “Phone and Modem Options” utility located in the Windows control panel and switch to the Modem tab. Click “Add” to start the modem installation.



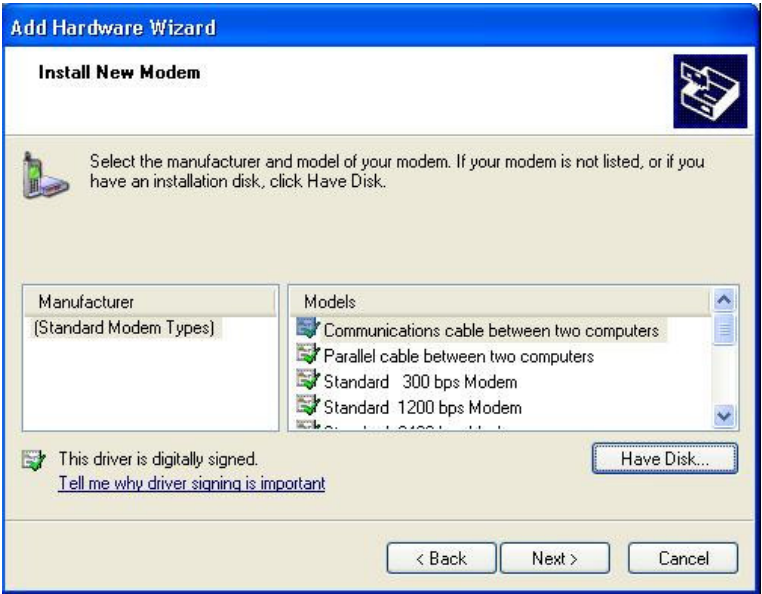
Stollmann E + V GmbH	TA+USBA User Guide
-------------------------	-----------------------



Select “Don’t detect my modem; I will select it from a list.” and click “Next”.



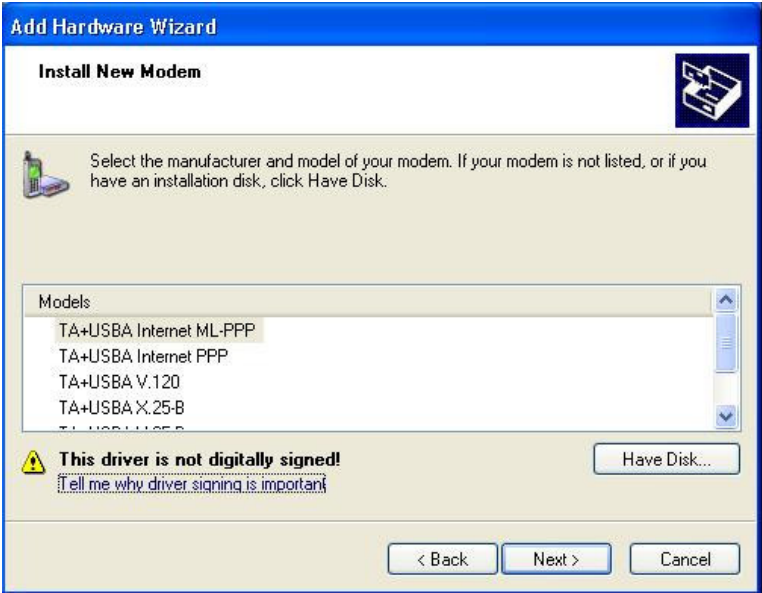
Click “Have Disk...” and browse to the mdmusba.inf file located at the TA+USBA driver CD in the folder “Driver\Win2kXP”. Click “OK” to proceed with the installation.



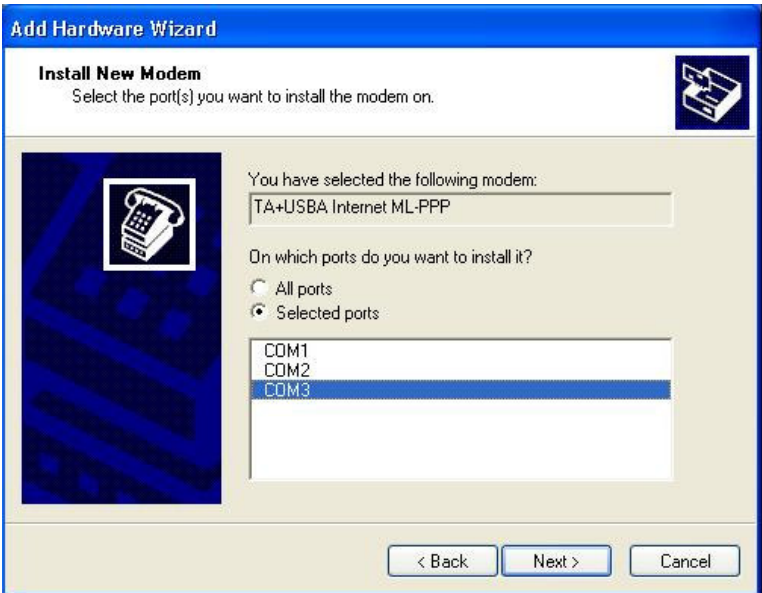
Stollmann E + V GmbH	TA+USBA User Guide
-------------------------	-----------------------



Select the modem profile which is required for your application and click “Next”.



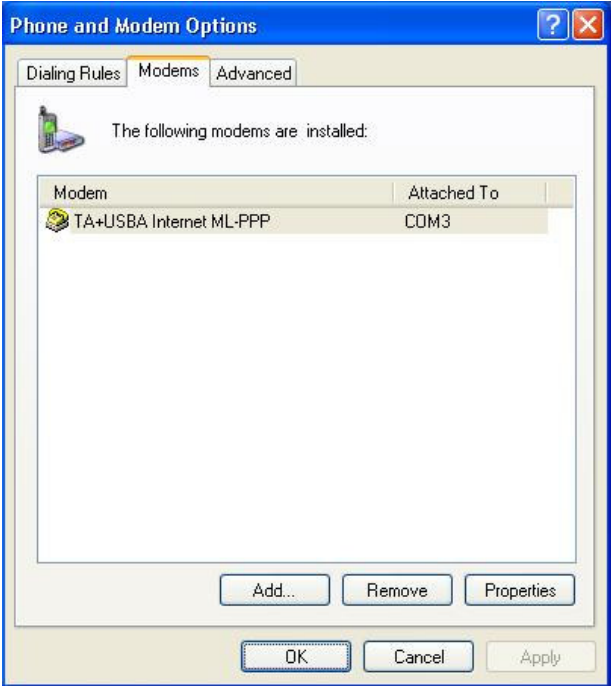
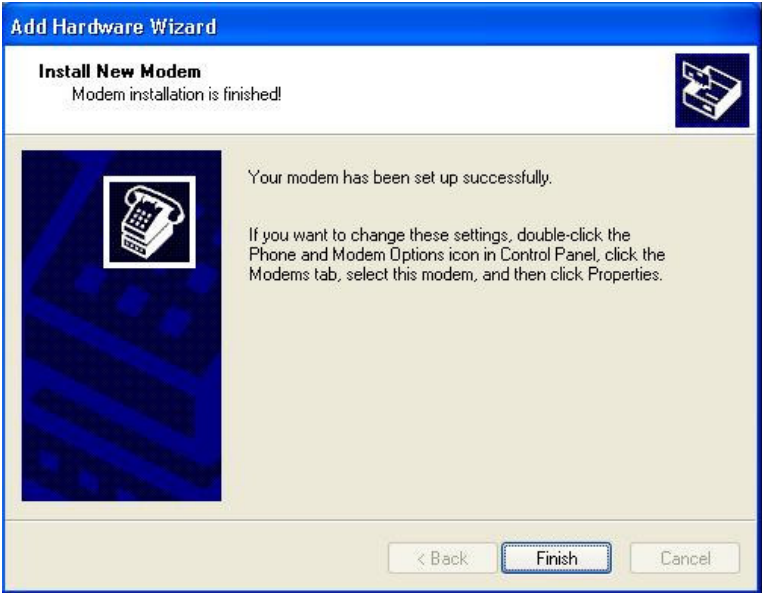
Select the COM port where the TA+USBA is connected to and click “Next”.



Stollmann E + V GmbH	TA+USBA User Guide
-------------------------	-------------------------------------



Click "Finish" to complete the installation.



Stollmann E + V GmbH	TA+USBA User Guide
-------------------------	-----------------------

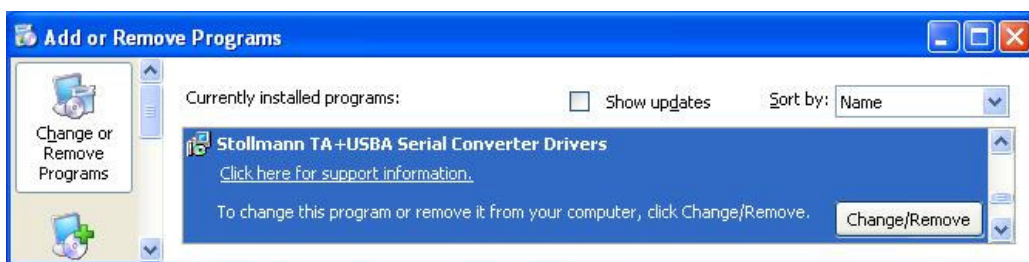


2.3 Uninstalling TA+USBA under Windows 2000/XP

To uninstall the TA+USBA follow the instructions below:

Disconnect the TA+USBA if attached to the PC.

Open the Add/Remove programs utility located in the Windows control panel. Select "Stollmann TA+USBA Serial Converter Drivers" from the list of installed programs.



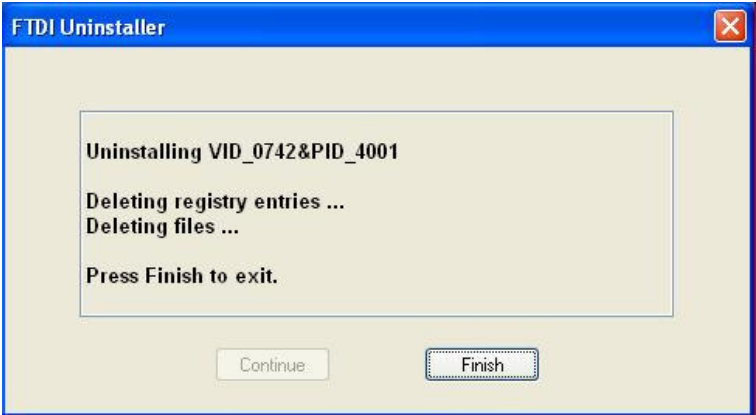
Click the "Change/Remove" button. This will run the TA+USBA uninstaller program. Click "Continue" to run the uninstaller.



Stollmann E + V GmbH	TA+USBA User Guide
-------------------------	-------------------------------------



When the uninstaller has finished removing the device from the system, the caption on the "Cancel" button will change to "Finish". Click "Finish" to complete the process.



Stollmann E + V GmbH	TA+USBA User Guide
-------------------------	-----------------------



3 History

Version	Release Date	By	Change description
1.00	12.03.2007	ta	Initial version for Windows 2000/XP